



High-speed Continuous Feed Inkjet Printing System

Jet Press 1160CF

JetPress



Printing with a high level of productivity and quality

The highest printing density in the industry (in 160 m/min continuous paper inkjet printer class)

High Performance

Full-colour printing at 160 m/min*1

The printer can print in full colour at a maximum speed of 160 m/min, which is equivalent to 2,096 pages per minute on precut A4 paper*2.

Mass batch prints of tens of thousands of pages may be created at high speeds through the use of the unwinder and rewinder*3.

This ensures great productivity and stable processing for high-volume/short-duration print jobs such as trans-promo materials and invoices.

*1: Speed priority mode (1,200x600 dpi)

*2: Two-sided printing with dual layout of A4 pages

*3: Optional

High Quality

Pigment Inks with High Concentrations

High-quality printing is achieved using high-concentration pigment ink which is suitable for both uncoated paper and matte-coated paper.*

*: Customers have the option to choose between 2 types of ink listed below.

- Ink for uncoated paper

- Ink for both uncoated and matte coated paper

High-quality, high-definition prints up to 1,200 x 1,200 dpi

Printer can produce output image with great resolution:

- 1,200 x 600 dpi (with a print speed of 160 m/min)

- 1,200 x 1,200 dpi (with a print speed of 80 m/min)

It prints characters and numbers clearly.

Fast Data Processing

Print server featuring Fujifilm Business Innovation's unique technology provides high quality output and rapid processing.

- Faster On-the-fly*1 printing
- High quality image data processing 1,200x1,200 dpi, 8 bit
- Supporting APPE*2 perfect for PDF output
- High-precision CMYK profiles
- High-speed, large volume printing of variable data (Mercury RIP, Industry standard PPML, PDF/VT-1, PDF/VT-2)
- Increased fault tolerance due to OS HDD redundancy
- Uninterruptible power supply (UPS)*3

*1: Requires direct printing without creating raster data in advance.

*2: Adobe® PDF Print Engine

*3: A product sold by Fujitsu. Two units are required.



Inner Structure

1 Print Head Box

The print head supports 1,200 x 1,200 dpi printing.

A single dot can be expressed with up to three gradations, allowing smoother density transitions.

2 Dryer

Two types of drying technology are installed: heat drum and heat air dryers.

3 Unwinder

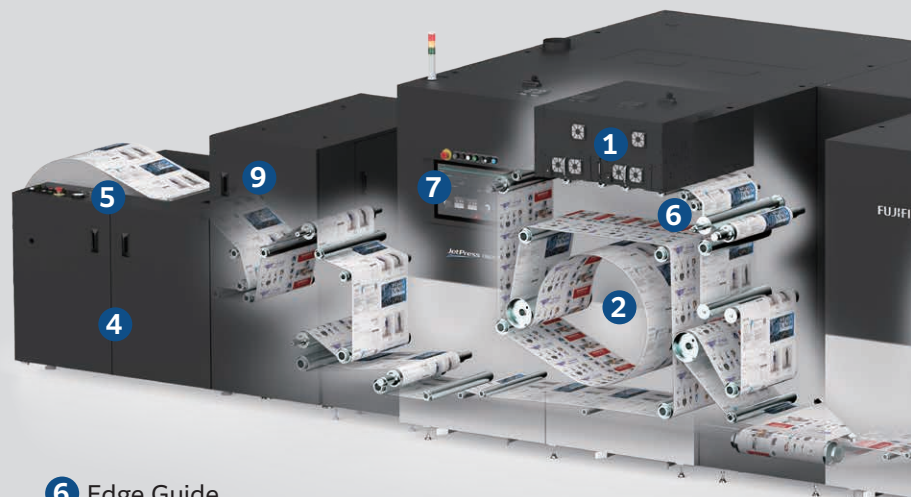
Lifting up/down heavyweight roll paper and paper alignment can easily and quickly be done with simple button operations. Furthermore, as it is directly connected to the printer, it can handle paper with high precision.

4 Rewinder (Optional)

Both upper and lower windings are available. A touch roller is installed to prevent wrinkles while rewinding.

5 Tension Controller

Tension controller stabilise paper feed even at high printing speeds by maintaining constant paper tension.

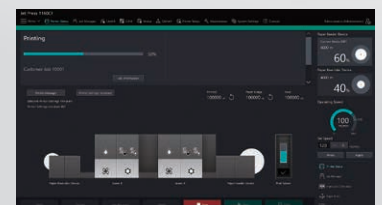


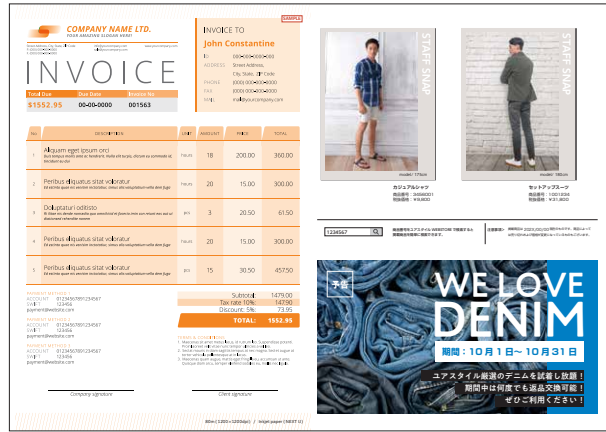
6 Edge Guide

Automatically adjusts paper meandering, allowing stable printing.

7 Operation Panel

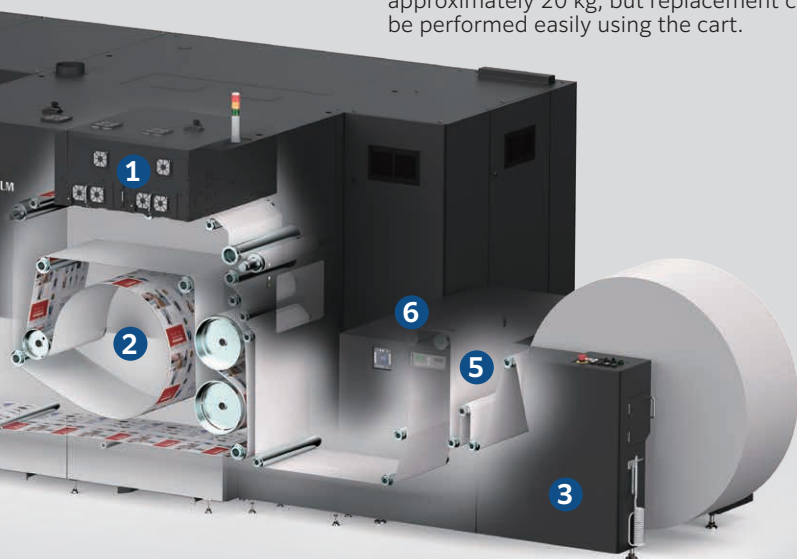
Machine operation is available through touchscreen interface.





8 Cart Ink Pack

Four-colour ink packs are installed at the back of the printer. Each ink pack weighs approximately 20 kg, but replacement can be performed easily using the cart.



9 Inspection Box (Optional*)

Capable to house an inspection system that is used for detection of print quality issues and variable data errors.

*: Inspection box availability varies depending on destination country. Please contact our sales representative for details.



10 Chiller

The chiller circulates cold water to cool the paper after drying.

Slack Web Unit (Optional)

Printer can also be connected to 3rd party finishers (loose tension type) by using the slack web unit. The unit applies tension to roll paper instead of the rewinder.

Jet Press 1160 CF Functions & Specifications

Basic Specifications

Item	Description
Printer configuration	Twin Engine Duplex
Colour capability	Full Colour
Print resolution	Image Quality Priority : 1,200 x 1,200 dpi Speed Priority : 1,200 x 600 dpi
Drop size	3 levels per drop
Warm-up time*1	15 minutes or less (room temperature 23°C)
Feeding paper speed	Maximum 160 m/minutes
Continuous print speed*2	Image Quality Priority : 80 m/minutes (1,048 ppm) Speed Priority : 160 m/minutes (2,096 ppm)
Paper size*3	Width 152.4 to 520.7 mm (5 print heads) Width 152.4 to 427.2 mm (4 print heads)
Paper weight*4	64 to 250 gsm
Feed paper capacity	Unwinder connected (maximum roll diameter: 1,270 mm)
Discharge paper capacity	Rewinder*5 connected (maximum roll diameter: 1,270 mm)
Noise level*6	During running : 79 dB(A)
Power supply	Three-phase AC200 V +/-10 %, 50/60 Hz, power capacity: 70 kVA (Printer) Three-phase AC400 V +/-5 %, 50/60 Hz, power capacity: 140 kVA (Printer)
Dimensions*7	W8,600 x D2,482 x H1,880 mm (with rewinder) W7,800 x D2,482 x H1,880 mm (with slack web unit, without rewinder)
Installation space*7	W12,600 x D5,700 mm (with rewinder) W13,300 x D5,700 mm (with inspection box and rewinder) W11,820 x D5,700 mm (with slack web unit, without rewinder)
Weight*7	9,337 kg (with rewinder) 8,887 kg (with slack web unit, without rewinder)

- *1: Start-up inspection time and purge time are excluded. It may take more than 15 minutes depending on the installation environment.
 *2: A4 size page x 2 layout and duplex printing. When printing a single document continuously. The continuous print speed may decrease due to conditions such as output data.
 *3: A margin of 15 mm on left and right edges of paper is the unprintable area when the Gripper Roller is set on the edge area of the paper.
 *4: It is restricted on printing speed with the paper over 157 gsm.
 *5: Optional.
 *6: Measurement based on the ISO11204 standard.
 *7: Unwinder (standard), rewinder (optional), slack web unit and other necessary units are connected. Excludes roll paper (feed/rewind), attention light and chiller. Includes inks.

Print Server [Print Server for the Jet Press 1160CF]

Item	Description
Type	External
Server OS	[Center Processor] Windows 11 IoT Enterprise LTSC 2024 (64bit) [Back End Processor] Windows Server IoT 2022 Standard
Print date format	PS, PDF2.0, PDF/X-1a, PDF/X-3, PDF/X-4, PDF/X-5, EPS, TIFF, JPEG, IPDS*1, AFPDS*1
RIP type	Adobe® PostScript® 3™ (Configurable PostScript Interpreter), Adobe PDF Print Engine 5
Printer driver OS*2	Windows 11 (64bit), Windows Server 2025 (64bit), Windows Server 2022 (64bit), Windows Server 2019 (64bit), Windows Server 2016 (64bit)
Connecting port	Ethernet 1000BASE-T / 100BASE-TX / 10BASE-T
Network protocol	LPR, FTP, SMB, HTTP, JDF, SNMP
Power supply	[Center Processor] Single-phase AC100-240 V +/-10%, 6.3 A (100 V) / 3 A (240 V), 50/60 Hz, ground connection [Back End Processor] Input 1: Single-phase AC200-240 V +/-10%, 16 A, 50/60 Hz, ground connection Input 2: Single-phase AC200-240 V +/-10%, 16 A, 50/60 Hz, ground connection
Maximum power consumption	[Center Processor] 0.3 kVA (in case of 100 V) [Back End Processor] Input 1: 3.2 kVA (in case of 200 V) Input 2: 3.2 kVA (in case of 200 V)
Dimensions	[Center Processor] W 98 x D 400 x H 340 mm [Back End Processor] W 700 x D 1,050 x H 2,000 mm
Weight	[Center Processor] 11 kg or less*3 [Back End Processor] 300 kg or less*4

Note: This Print Server is configured with Center Processor and Back End Processor.
 *1: Optional.
 *2: Please refer to our official website for the latest supported OS.
 *3: Print server only. Excludes monitor, mouse and keyboard.
 *4: Includes console monitor, mouse, keyboard, and touch pad.

- To comply with paper weight specifications, it is recommended to use our recommended paper. Document may not be printed correctly depending on usage conditions.
- Functional spare parts will be available for at least 7 years after the product is no longer manufactured.



FUJIFILM Business Innovation Asia Pacific Pte. Ltd.

Reg. No. 199202000004 (993478-A) ST No. W10-1808-32000018

Head Office:

Ground Floor, Axis Business Park, Block C, No. 10 Jalan Bersatu 13/4, 46200 Petaling Jaya, Selangor, Malaysia.
 Tel: 03-7882 2888 Fax: 03-7882 2828 Customer Service Hotline: 1300-88-1163

Branches:

Penang: No. 3-G, 3-1 & 3-2, Persiaran Bayan Indah, Bayan Bay, 11900 Bayan Lepas Penang.
 Tel: 04-643 5000 Fax: 04-644 4677

Johor Bahru: No.21 & 23, Jalan Setia Tropika 1/28, Taman Setia Tropika, 81200 Kempas, Johor Bahru.
 Tel: 07-238 7868 Fax: 07-238-2678

Melaka: No.17, Jalan KL3/11, Kota Laksamana, 75200 Melaka.
 Tel: 06-281 0466 Fax: 06-281 0408

Kota Kinabalu: Block K, Lot 65, Ground-5th Floor, KK Time Square, 88100 Kota Kinabalu, Sabah.
 Tel: 088-486 888 Fax: 088-486 668

Kuching: No. 201, Lot 3050, Eastmoore Centre, 2 1/2 Mile Jalan Rock, 93200 Kuching, Sarawak.
 Tel: 082-240 633, 082-254 633 Fax: 082-418 733

fujifilm.com/fbmy

The available model varies depending on the country/region. Please ask the sales representatives for details.

The product specifications, appearance and other details in this brochure are subject to change without notice for improvements.

Reproduction Prohibitions Please note that reproduction of the following is prohibited by law : •Domestic and foreign currencies, government-issued securities, and national bonds and local bond certificates. •Unused postage stamps, post cards, etc. •Certificate stamps stipulated by law. •Reproducing works forming the subject matter of copyright (literary works, musical works, paintings, engravings, maps, cinematographic works, drawings, photographic works, etc.) is not permitted unless the reproduction is for the purpose of personal use, family use or other similar uses within a limited circle.

Trademarks •FUJIFILM and FUJIFILM logo are registered trademarks or trademarks of FUJIFILM Corporation. •Adobe, Adobe logo, PostScript and PostScript logo, Adobe PDF, Adobe PDF Print Engine are either registered trademarks or trademarks of Adobe in the United States and/or other countries. •All product names and company names mentioned in this brochure are trademarks or registered trademarks of their respective companies.



For Your Safety

Before using the product, read the Instruction Manual carefully for proper use. Use the product with the power source and voltage specified. Be sure to establish ground connection. Otherwise, electronic shock may result in the case of a failure or short circuit.

The information is as of May, 2026. PIC-0217 MY (2209-R4)