



The Evolution of Standard  
Revoria Press PC2120

 **Revoria Press™**



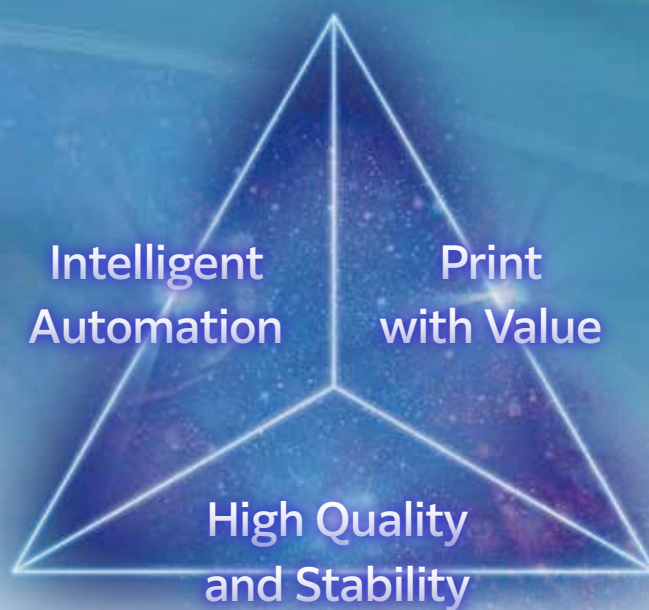
# The Evolution of Standard

## Defining the New Normal. Setting the New Standard.

The Revoria Press PC2120 redefines creative possibilities by offering the widest colour spectrum ever, delivering prints that radiate vibrant, true-to-life brilliance and unmatched brand precision. Powered by state-of-the-art AI technology and advanced automation, every detail is refined to perfection, ensuring seamless performance and consistency across every project. From vivid colour accuracy to effortless productivity, this is innovation designed to meet the highest demands. The new standard of print is no longer a future aspiration—it's here, transforming potential into unparalleled excellence.









# Innovative Automation and Efficiency

## Production print operation driven by AI.

Outstanding automation features expand the potential of production printing. By leveraging our proprietary AI technology, we deliver optimal output without depending on specialised skills or experience. With a wide variety of functions, our solutions enhance efficiency and productivity, providing strong support for our customers' daily operations.

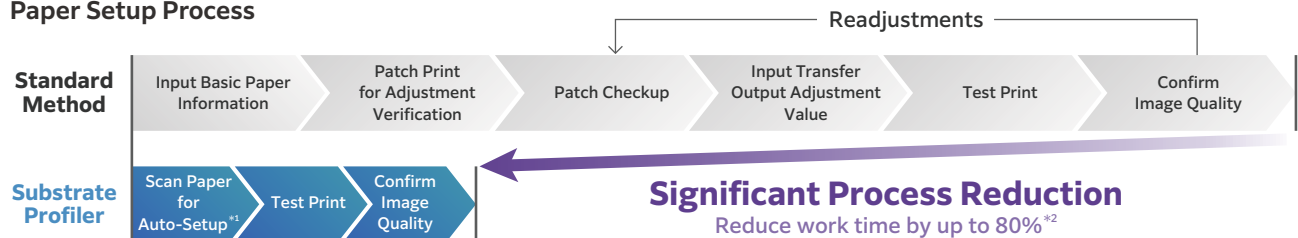
Fujifilm's AI technology innovates your printing environment.

## Automatic Paper Setup

The Substrate Profiler utilises AI to automate the time-consuming paper setup by suggesting optimal settings based on scanned data of the paper. Simply placing the paper in the Substrate Profiler allows the system to automatically input basic information such as paper type and weight. Moreover, suggestions include transfer output adjustment values, reducing the need for test prints and visual checks, leading to efficient and consistent print quality.



## Paper Setup Process



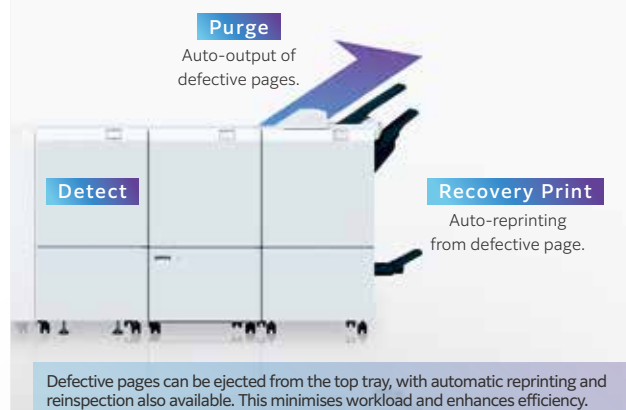
\*1 Paper type, colour, weight, and transfer output adjustment values are set automatically.  
\*2 Based on an internal investigation.

## Print Inspection\* Reduce Workload

Printed jobs are automatically inspected inline, reducing dependence on operator skill and workload needed for visual inspection. The image inspection compares the printed jobs with RIP images to detect print defects such as dots and folds. The text inspection verifies text and barcodes against reference files (CSV). This enables inspection of massive variable data to be completed during print production.

\*Optional

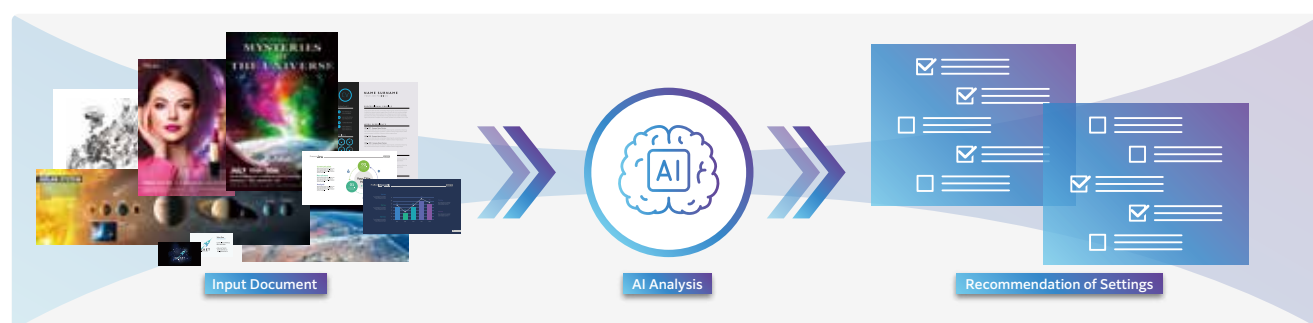
Inspection Type	Inspection Target
Image Inspection	<ul style="list-style-type: none"><li>• Dots and dirt</li><li>• Print defects</li><li>• Paper folds</li></ul>
Text Inspection	<ul style="list-style-type: none"><li>• Text and barcode readability</li><li>• Verification with Reference Data (CSV File)</li><li>• Numerical continuity between pages</li><li>• Consistency of front/backtext on Front and Back</li></ul>



## Optimal Image Quality Recommendation for Each Document\*

AI analyses each input document and recommends the best adjustment settings on Revoria Flow server to optimise image quality. Recommendations include printing of small texts and thin lines, adjusting gradients, and automatic colour separation of RGB data to CMYK, green and pink colours — all customised to the characteristics of the document. Leaving AI to decide which settings to use, you can effortlessly achieve superior print quality.

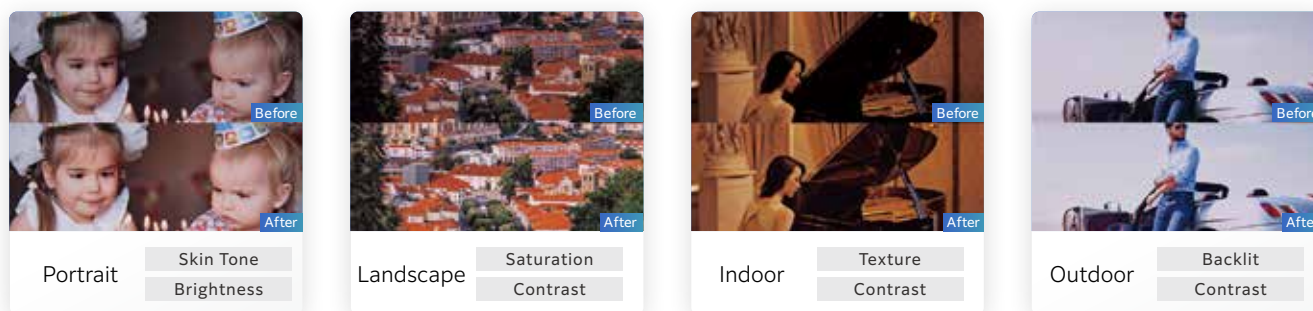
\*Available in Revoria Flow.



## Photo Quality Optimisation\*<sup>1</sup>

AI automatically analyses each individual photo\*<sup>2</sup> in the document and applies scene-specific corrections. Images that are too dark, too bright, backlit, or with poor skin tone can be automatically optimised for high-quality output.

\*1: Available in Revoria Flow. \*2: Applicable to RGB-type images.

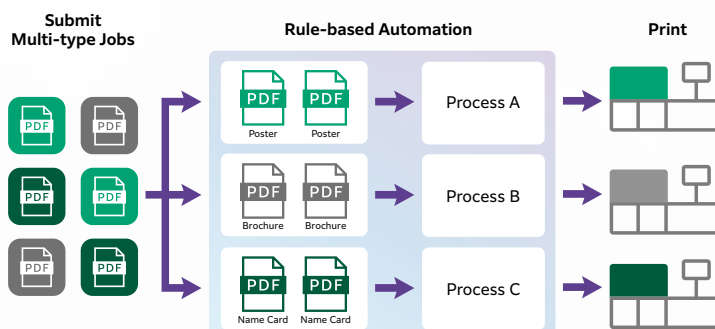


Advanced Digital Workflow Automation. Made Simple.

## Revoria XMF PressReady

Revoria XMF PressReady is an intuitive centralised management software that empowers print service providers to manage job from different submission channels efficiently.

Automation of repetitive tasks—such as preflight, imposition, grouping, sorting, and numbering—can be performed efficiently and effortlessly. Additionally, jobs can be routed to the appropriate digital printer according to predefined conditions.



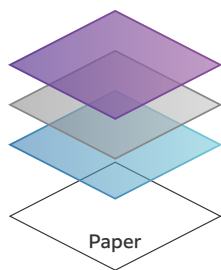
Optional Software

# Print with Value using the 1 Pass 6-Colour Engine

Infinite creative potential delivers new business opportunities.

The addition of green to the specialty toner lineup further expands the printable colour gamut. The reproduction of data designed in RGB, which is challenging with CMYK alone, has been significantly improved. Moreover, support functions such as automatic colour separation and preview features make it easy to utilise specialty toners. With overwhelming expressive power, it meets a wide range of customer needs.

## Specialty Toner Lineup



Overlay Layer  
CMYK Layer  
Underlay Layer

### Specialty Toners Available for Overlay

- Green
- Gold
- Custom Red
- Pink
- Silver
- White
- Clear
- Textured Paper

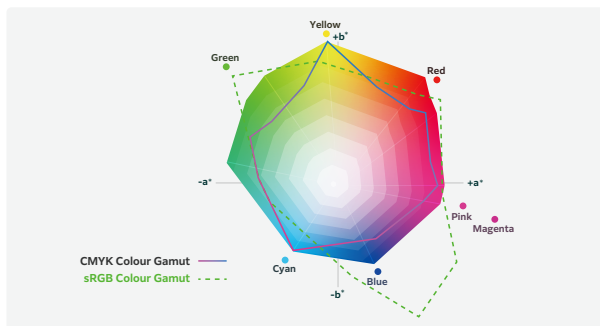
### Specialty Toners Available for Underlay

- Green
- Gold
- Pink
- Silver
- White

## Vivid Colours, Wide Colour Gamut

### Green & Pink

Green and Pink produce vivid, eye-catching colour expressions that exceed the CMYK gamut, matching thousands of brand-critical PANTONE colours. The two specialty toners together bring the colours even closer to those displayed in RGB on a monitor. For PANTONE spot colours, a 93% coverage rate\* is achieved. The vibrant brilliance, transparency, and subtle colour nuances create a remarkable sense of depth, greatly expanding the expressive range of your designs.



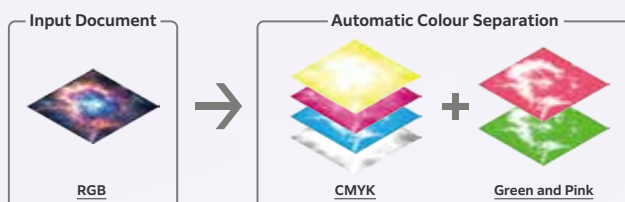
\*Based on PANTONE's verification, this percentage refers to colours from the PANTONE FORMULA GUIDE Solid Coated whose  $\Delta E00$  colour difference compared to the output colour falls within the range of 3 or less.



## Support Features of Specialty Toners

### RGB Data Reproduction using Green and Pink

Revoria Flow can automatically separate RGB data into CMYK with green and pink through a single click. This allows designers to achieve their desired results easier, without applying separation using editing software.



### Enhance Brightness with Pink

Pink brightens the entire image and produce smoother, more realistic skin tones. By simply selecting the level of pink, Revoria Flow automatically balances magenta and pink colour to extend colour gamut to print more vividly, without any image editing.







## Creating a Sense of Luxury and Exclusivity

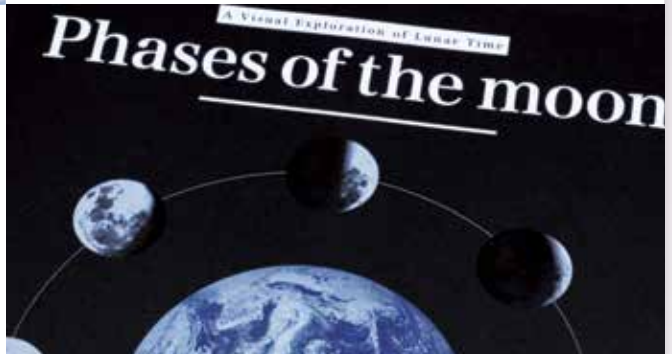
### Gold & Silver

Gold and silver bring brilliance and distinction to production printing. Whether used alone or combined with CMYK, they produce vibrant metallic effects that enhance logos, accents, and design details. These metallic effects add premium value and help brands stand out with striking, high-impact prints.

## Expand Expressions Across Diverse Media

### White

The high opaque white expands potential of print on coloured and transparent media. Beyond its role as a spot colour, its excellent opacity improves colour vibrancy of CMYK when used as underlay of CMYK.



## Striking Designs with Extra Dimension

### Clear

Clear adds a unique varnish-like effect to prints, adding engaging shine and visual interest on plain media. The visual effect highlights texts to add an extra dimension and a touch of luxury with subtle patterns to produce creative, personalised print. Additionally, clear can be used as watermarks on coupons and tickets for anti-counterfeiting measures.

## High-Quality Printing on Textured Paper

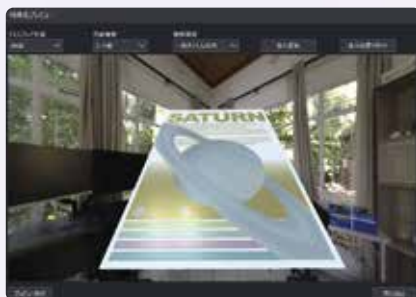
### Textured Paper Toner

Textured paper toner improves the transfer of the colour toner onto the concave areas of particularly challenging textured paper, improving print quality, and expanding the types of paper and applications that can be printed.



## Preview Specialty Colours

You can preview the effect of specialty colours on your monitor, providing realistic indication of how they will print without the need for test prints. Preview images can also be saved for effective client proposals.

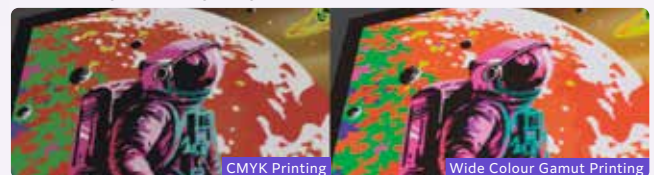


▲ Specialty Colour Preview

## Embedded Web Viewer\*

We provide a viewer that can be embedded into websites such as online print ordering platforms. Your customers can simply upload RGB data to the viewer to preview the wide colour gamut printing\* results before ordering. This supports the promotion of wide colour gamut printing and contributes to expanding order volumes.

\* Wide colour gamut printing uses green and/or pink toners.



▲ Print results can be compared side by side.

# Exceptional Quality and Stability

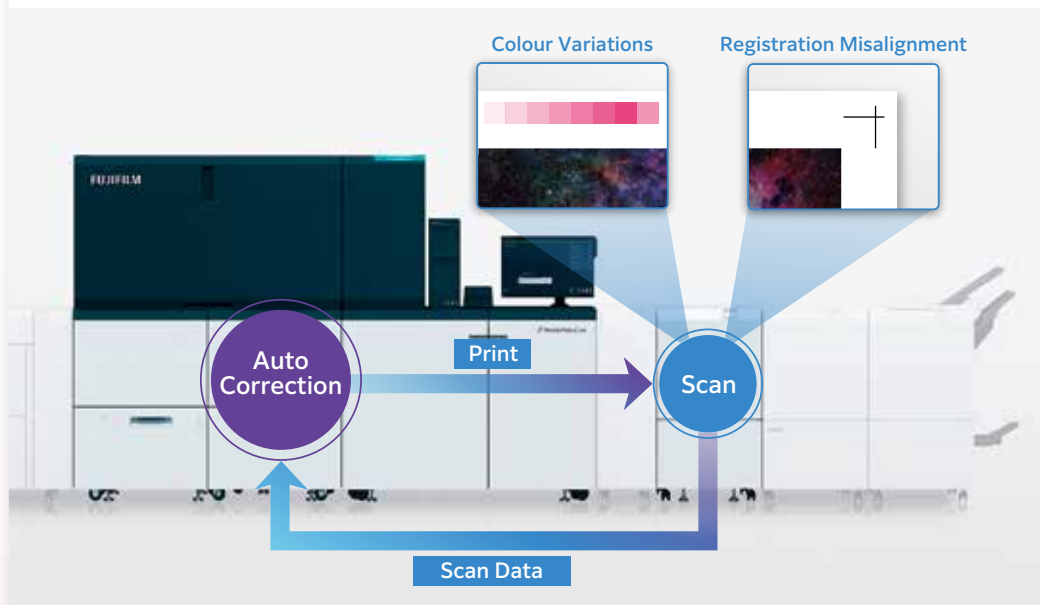
Unwavering reliability as a production asset, even during continuous operation.

Revoria Press PC2120 supports your business with its consistent high-definition expression built on a proven platform of reliable technologies that won't let you down. Real-time corrections for colour variations and registration misalignments further maintains exceptional quality and stability even through extended continuous use.

## Real-Time Print Correction

The Smart Monitoring Gate D1\* monitors changes in colour density and front-to-back registration of print jobs as they are being printed. By scanning print jobs, the system detects and automatically corrects colour variations and registration misalignments in real time, allowing stable print quality even for large-volume jobs. Print optimisation is done without reducing productivity, achieving both high quality and high productivity.

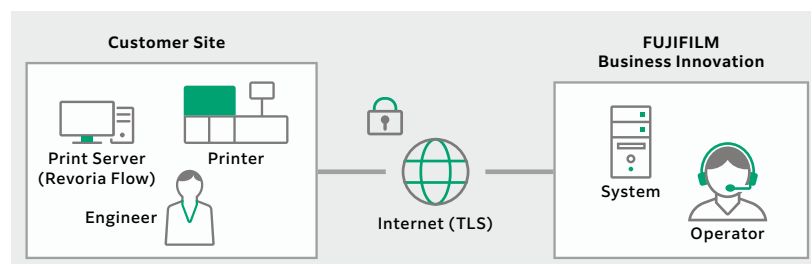
\* Optional



Reliable Support System

## Remote Services

Remote Services enhance machine reliability, uptime, and productivity, thereby ensuring seamless business operations. This service connects our support systems and skilled teams worldwide, providing prompt and precise assistance exactly when needed. This proactive approach, grounded in extensive expertise and comprehensive product knowledge, enables us to deliver the solutions you require.



5

## Cooling Module to Suppress Paper Troubles

Curling and sticking between sheets can be prevented by rapidly cooling the paper after toner fixation. This allows subsequent processes to proceed without delay, enabling smooth workflow towards shipment.



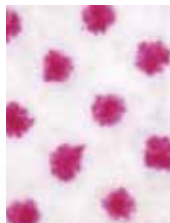
# Core Technologies

## 1 Superior Print Quality

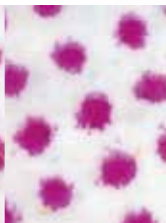
Super EA-Eco toner\* has one of the smallest toner particle sizes in the world, delivering superior print quality. Gradations and midtones are rendered beautifully and smoothly, while small characters and thin lines are reproduced sharply and clearly.

\* CMYK

▼ Offset Printing



▼ Super EA-Eco Toner



## 2 High-Performance Print Server Revoria Flow

With high-speed, high-resolution RIP processing, Revoria Flow maximises printer productivity. Its advanced image quality features, including gradation, text, and thin line correction, deliver superior print quality. Additionally, high-precision 3D calibration and feedback functions ensure consistent colour reproduction.

### Consolidated Operator Workstation

Printer and Revoria Flow operations are now integrated into a single interface, minimising operator's work path and improving productivity.

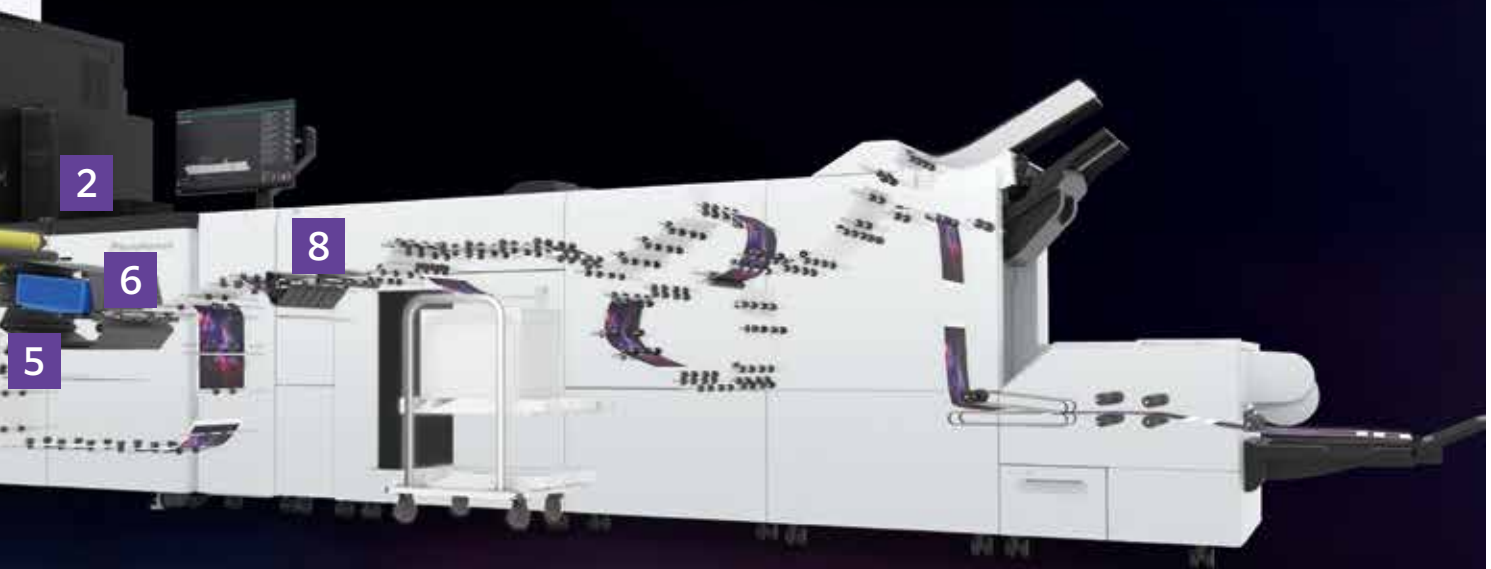
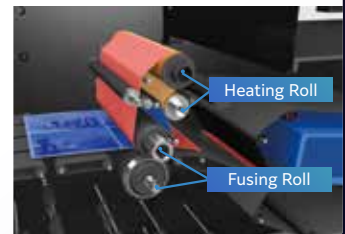
## 3 High-Precision Paper Feeding

Sensors detect the paper position and precisely control rollers, ensuring accurate feeding even during 120 ppm high-speed printing. Stable paper transport can be maintained regardless of media type.



## 4 Smart Fuser Enables High Productivity and Quality

The fuser applies optimal heat depending on the media, achieving high-quality print results across a wide range of papers—from thin to thick paper and banner sheet. Even in 6-colour printing, high-speed printing and superior image quality are maintained without compromising speed.



## 6 Automatic Pre-Printing Adjustments

Built-in inline sensors automatically perform various adjustments to maintain high print quality.

Alignment correction

Transfer output adjustment

Density correction

## 7 Highly Reliable Air Suction Feeder\*

The Air Suction Feeder enhances the feed performance of papers, including those with heavy dust, textured surfaces, and coated finishes. The shuttle head transport lifts the paper and separates sheets that would normally be prone to sticking, enabling stable and high-speed feeding.

\* Optional

## 8 Ease Paper Handling by Eliminating Static Electricity

Static Eliminator D1\* provides a remarkable static elimination effect on a wide range of media, including single-layer film, synthetic paper, water-resistant paper, and tack paper. This suppresses paper sticking and significantly improves the efficiency of downstream processes.

\* Optional

# Various Options Available According to Needs

Full Configuration W11,072 x D1,104 x H1,786 mm



## Feeding Options

### Air Suction Feeder

#### Air Suction Feeder C1-DS\*1

Air Suction

Multifeed Detection

Capacity: 2,200 sheets x 2 trays + 250 sheets  
Paper size: Max A3, 330 x 660 mm\*2



#### Chained Air Suction Feeder C1-DS-L\*1 + C1-DS-R

Air Suction

Multifeed Detection

Capacity: 2,200 sheets x 4 trays + 250 sheets  
Paper size: Max A3, 330 x 660 mm\*2



#### Air Suction Feeder C1-DSXL\*1 + Banner Unit for Air Suction Feeder C1-DSXL

Air Suction

Multifeed Detection

Banner Sheet Feeding

Capacity: 900 sheets + 2,200 sheets + 250 sheets  
Paper size: Max A3, 330 x 1,300 mm (Upper tray)



#### Chained Air Suction Feeder C1-DSXL-L\*1 + C1-DS-R + Banner Unit for Air Suction Feeder C1-DSXL

Air Suction

Multifeed Detection

Banner Sheet Feeding

Capacity: 900 sheets + 2,200 sheets x 3 trays + 250 sheets  
Paper size: Max A3, 330 x 1,300 mm (Left Upper tray)



### High Capacity Feeder

#### High Capacity Feeder C3-DS + Multi Sheet Inserter or Multi Sheet Inserter for Banner Print

Air Assist

Multifeed Detection

Capacity: 2,100 sheets x 2 trays + 250 sheets  
Paper size: Max A3, 330 x 660 mm\*2



#### High Capacity Feeder C3-DS + 2nd High Capacity Feeder C1-DS + Multi Sheet Inserter or Multi Sheet Inserter for Banner Print

Air Assist

Multifeed Detection

Capacity: 2,100 sheets x 4 trays + 250 sheets  
Paper size: Max A3, 330 x 660 mm\*2



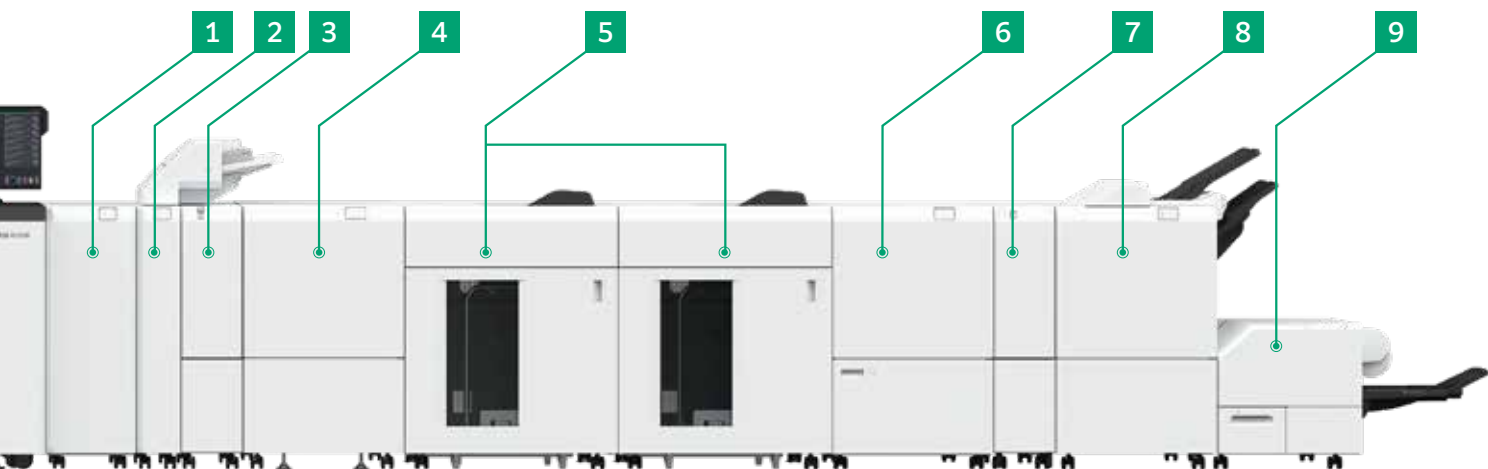
\*1: Multi Sheet Inserter for Banner Print is equipped as standard. \*2: When using Multi Sheet Inserter for Banner Print.

## Print Server

### Revoria Flow PC31







## Output Options

### 1 Interface Decurler Module D1

Real Time Curl Correction

### 2 Inserter D1

Cover / Sheet Insertion

### 3 Static Eliminator D1

Eliminate Static Electricity

### 4 Smart Monitoring Gate D1

Real Time Print Correction

Print Inspection\*<sup>1</sup>

### 5 High Capacity Stacker A2

5000-sheet Offset-stacking

Stacker Cart

Long Sheets Output\*<sup>2</sup>

### High Capacity Stacker A2 with Transport Module

Connection with 3rd Party Finisher

5000-sheet Offset-stacking

Stacker Cart

Long Sheets Output\*<sup>2</sup>

### 6 Crease / Two-sided Trimmer D2

Two-sided Trim

Crease

### 7 Folder Unit CD2

Z Fold Half Sheet

Tri-fold

### Offset Catch Tray

Offset Stack



### Long Catch Tray

Long Sheets Output



### 8 Finisher D6 with Booklet Maker

Sort / Stack

Staple

Punch\*<sup>2</sup>

Single Fold

Saddle Staple

Long Sheets Output\*<sup>2</sup>

### Finisher D6

Sort / Stack

Staple

Punch\*<sup>2</sup>

Long Sheets Output\*<sup>2</sup>

### 9 Square Back Fold Trimmer D1

Face Trim

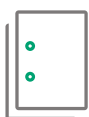
Square Back

\*1: Smart Inspection System is required. \*2: Optional

## Finishing Applications



Cover / Sheet Insertion



Punch



Staple



Saddle Staple



Single Fold



Z Fold Half Sheet



Tri-fold



Crease\*<sup>1</sup>



Face Trim



Two-sided Trim



Full Bleed Trim\*<sup>2</sup>



Square Back

\*1: Up to 5 creases are possible for mountain fold and valley fold. \*2: Full Bleed Trim is performed for Two-sided Trim and Face Trim.

# Revoria Press PC2120 Functions & Specifications

## Basic Specifications

Item	Description
Color capability	Full color
Print resolution	2,400 x 2,400 dpi
Warm-up time	420 seconds or less (room temperature 23℃ )
Continuous print speed*1	A4: 120 ppm, A3: 63 ppm
Paper size*2*3	Tray 1, 298 x 148 mm to 330 x 488 mm
Paper weight	Tray 1, 252 to 400 gsm
Paper capacity*4	Tray 1, 22,100 sheets x 2-tray
Power supply	Single-phase AC200-240 V +/-10 %, 44 A, 50/60 Hz, ground connection
Maximum power consumption	9.0 kW (in case of 240 V)
Dimensions*5	W 2,995 x D 1,104 x H 1,786 mm
Weight*6	1,558 kg or less

\*1: When continuously printing a single sided document. 52 to 400 gsm, uncoated paper. Print speed may be reduced depending on conditions of output data, on whether specialty toner is used, on whether auto image quality adjustment is performed, on whether the job includes a mixture of paper sizes and types, and other reasons.  
\*2: Image loss width: lead edge 4.0 mm, trail edge 2.0 mm, front 2.0 mm, rear 2.0 mm.  
\*3: When setting main scanning 98 to 182 mm paper, Post Card Kit 2 is required.  
\*4: 82 gsm paper.  
\*5: Printer unit. Excludes feeding / output options.  
\*6: Printer unit. Excludes feeding / output options. Excludes toner cartridges.

## Print Server [Revoria Flow PC31]

Item	Description
Type	External
CPU	Intel® Xeon® E-2388G Processor (3.20 GHz)
Memory	64 GB (Max 64 GB)
Storage device	SSD: 3,840 GB (System) + 3,840 GB x 2 (Spool), DVD Multi drive
Server OS	Windows 11 IoT Enterprise LTSC 2024 (64bit)
Print data format	PS, PDF2.0, PDF/X-1a, PDF/X-3, PDF/X-4, PDF/X-5, EPS, TIFF, JPEG, PDF/VT, PPML
RIP type	Adobe® PostScript® 3™ (Configurable PostScript Interpreter), Adobe® PDF Print Engine 6
Printer driver OS*1	Windows 11(64bit), Windows Server 2025 (64bit), Windows Server 2022 (64bit), Windows Server 2019 (64bit), Windows Server 2016 (64bit), macOS 15 / 14 / 13 / 12 / 11
Connecting port	Ethernet 1000BASE-T / 100BASE-TX / 10BASE-T x 2
Network protocol	LPR, FTP, SMB, HTTP, JDF, SNMP, Bonjour
Power supply	Single-phase AC 100-240 V +/-10%, 6.0 A (100 V) / 2.9 A (240 V), 50/60 Hz, ground connection
Maximum power consumption	0.5 kW (in case of 240 V)
Dimensions*2	W 178 x D 547x H 457 mm
Weight*2	19 kg or less

\*1: Please refer to our official website for the latest supported OS.  
\*2: Print Server only. Excludes monitor, mouse, and keyboard.

- Performance is not guaranteed for all paper types. Please contact your local FUJIFILM Business Innovation representative for recommended paper.
  - Functional spare parts will be available for at least 7 years after the product is no longer manufactured.



**FUJIFILM Business Innovation Philippines Corp.**  
25th Floor, SM Aura Tower, 26th St. Corner McKinley Parkway, Taguig City 1630 Philippines  
Tel. 632-8878-5200  
[fujifilm.com/fbph](https://fujifilm.com/fbph)

The available model varies depending on the country/region. Please ask the sales representatives for details.

The product specifications, appearance and other details in this brochure are subject to change without notice for improvements.

**Reproduction Prohibitions** Please note that reproduction of the following is prohibited by law : •Domestic and foreign currencies, government-issued securities, and national bonds and local bond certificates. •Unused postage stamps, post cards, etc. •Certificate stamps stipulated by law. •Reproducing works forming the subject matter of copyright (literary works, musical works, paintings, engravings, maps, cinematographic works, drawings, photographic works, etc.) is not permitted unless the reproduction is for the purpose of personal use, family use or other similar uses within a limited circle.

**Trademarks** •FUJIFILM and FUJIFILM logo are registered trademarks or trademarks of FUJIFILM Corporation. •Revoria, Revoria logo, Revoria Press, Revoria Flow and Revoria XMF are registered trademarks or trademarks of FUJIFILM Business Innovation Corp. •Adobe, Adobe logo, PostScript and PostScript logo, Adobe PDF, Adobe PDF Print Engine are either registered trademarks or trademarks of Adobe in the United States and/or other countries. •Windows, Windows Server and Active Directory are registered trademarks of Microsoft Corporation. •G7 is a registered trademark of Idealliance. •Idealliance is a registered trademark of PRINTING United Alliance. •PANTONE and other Pantone trademarks are trademarks or registered trademarks of Pantone LLC in the United States and/or other countries. •All product names and company names mentioned in this brochure are trademarks or registered trademarks of their respective companies.

**For Your Safety**

Before using the product, read the Instruction Manual carefully for proper use. Use the product with the power source and voltage specified. Be sure to establish ground connection. Otherwise, electronic shock may result in the case of a failure or short circuit.