



A3 Monochrome  
Multifunction Printer  
**Apeos 6571**





# Uncompromising productivity to optimise your digital journey

## Apeos 6571

<b>Copy / Print</b> <b>65 ppm*</b> 1	<b>Scan</b> Colour/ Monochrome <b>270 ppm*</b> 2	<b>Fax**3</b> <b>Super G3 FAX</b>	<b>Printing Resolution</b> <b>1,200 X 2,400 dpi</b>	<b>Control Panel</b> <b>10.1"</b> Tilted Colour Touchscreen
---	---	--------------------------------------	--	--

- Cloud enabled ● Mobile enabled ● Security
  - LED reminder to collect printed document / originals ● Multi-feed detection
- \*1: A4 LEF. \*2: When both sides of a sheet are scanned through a single pass using the Duplex Automatic Document Feeder.  
\*3: Optional.

## Quick and Simple operability

### Quick startup and output for greater efficiency

Smart WelcomEyes detects the user and automatically exits sleep mode. In Fast Boot Mode, the control panel is available in as little as 6 seconds. Ready to use whenever you need it.

### Quick scanning of high-volume documents

The Duplex Automatic Document Feeder C2-PC can hold up to 250 sheets of documents and read them at a high speed of up to 270 ppm\* with 1 pass 2 sided scanning for fast scanning.

\* 1 pass 2 sided scanning using FUJIFILM standard paper (A4 LEF), 200 dpi, to Folder.



### Paper trays close lightly

Paper trays are equipped with a retraction mechanism so you can close them slowly and quietly by pushing them halfway through.



## Various features saving time and effort in scanning operation

Scanned data can be transferred through a variety of methods including e-mail, URL, and send to PC (SMB/FTP/SFTP). In addition to TIFF and JPEG, the scanned data can be converted to OCR-enabled\* or high compression/ specific colour PDF or DocuWorks documents. Also they can be converted to editable Excel®\*/Word\* documents.

\* Optional.

### Print out from any connected multifunction printer within the office

With Server-less On-Demand Print\*, you have the flexibility to print and collect the print outs from any of the connected multifunction printers.

\* Optional.

### Flexibility in office layout

Supports wireless LAN environment\*. Can be installed without a wired network, increasing flexibility in multifunction printer locations.

\* Optional. Print Utility, AirPrint, Mopria® Print Service, Mopria Scan are supported.

### Light notification reminder

The notification light reminds user of uncollected original or printed document on the trays.

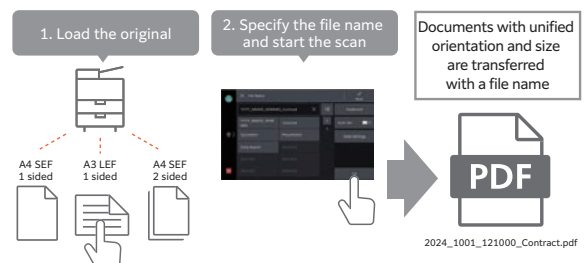


### Seamless sharing and document management

With ScanAuto, you can easily send scanned data with a touch of a button. Automatically adjusts the orientation or 1-sided/2-sided of the original document.

Automatically selects the scan settings suitable for the document. Features such as exclusion of blank pages and skew correction are automatically detected and applied by the multifunction printer. File names can be assigned from presets on the UI screen to prevent scanned files from getting lost on the PC.

Note: The output destination can be chosen between Scanner (E-mail Transmission) and Scanner (PC Storage).



# Optional

Finisher-B5 +Booklet Maker Unit	Finisher-C4 / C5		Finisher-C4 / C5 with Booklet Maker		Finisher-C4 / C5 with Booklet Maker +Folder Unit CD3	
B5	C4	C5	C4	C5	C4	C5



Stapling capacity	Staple	50 sheets	50 sheets or 65 sheets <sup>*1</sup>		50 sheets or 65 sheets <sup>*1</sup>		50 sheets <sup>*2</sup> or 65 sheets <sup>*1*2</sup>	
	Staple-free Staple	10 sheets <sup>*3</sup>	-	10 sheets <sup>*3</sup>	-	10 sheets <sup>*3</sup>	-	10 sheets <sup>*3</sup>
Punch		2/4 holes or 2/3 holes <sup>*4</sup>	-	2/4 holes or 2/3 holes <sup>*5</sup>	2/4 holes <sup>*5</sup>	2/4 holes or 2/3 holes <sup>*5</sup>	2/4 holes <sup>*5</sup>	2/4 holes or 2/3 holes <sup>*5</sup>
Saddle Staple		15 sheets <sup>*6</sup>	-		20 sheets		20 sheets	
Single Fold		● <sup>*6</sup>	-		●		●	
Tri-fold / Z-fold Half Sheet		-	-		-		● <sup>*7</sup>	
Paper capacity <sup>*8</sup>	Output tray	-	500 sheets		500 sheets		500 sheets	
	Finisher	2,000 sheets	3,000 sheets		1,500 sheets		1,500 sheets	

\*1: With Finisher-C Staple Unit 65 Sheets.

\*2: When mixed with Z fold half sheet, the number of sheets is reduced.

\*3: 64 to 80 gsm paper.

\*4: Finisher-B5 requires the 2/4 Hole Punch Module or the US 2/3 Hole Punch Module.

\*5: Punching function cannot be added. Select a finisher with the hole punching function.

\*6: Booklet Maker Unit is required. Saddle Staple and Single Fold on Finisher-B5 make creases without folding.

\*7: Folder Unit CD3 is required.

\*8: 70 gsm paper. A4 size.

## For high-volume copy, print, and fax users

### High Capacity Feeder

High Capacity Feeder B1 can feed 2,000 sheets\*. Maximum paper capacity of 5,200 sheets\* can be loaded to support high volume printing needs.

\* 80 gsm paper.

### Three-way output

Supports sorted output for copy, print, and fax jobs.



## Top-class security supporting DX

### Equipped with security features to address diverse security threats

As network-connected information devices, the printers are equipped with state-of-the-art security features to protect your valuable information assets from cyber-attacks and other threats.

#### Protect from unauthorised user

- User authentication and usage restrictions by user prevent unauthorised operations and access by users without permissions.
- Expansion with Secondary Ethernet\* allows a single multifunction printer to be used on a separated network, etc.

\* Optional.

#### Protects Data

- Encryption of communication paths with TLS and IPsec
- Protection of scanned files and e-mails through encryption/electronic signatures
- Robust AES-256 encryption

#### Protect from unauthorised access

- Account lock function
- Restriction of accessible IP addresses
- Prevention of software tampering during multifunction printer startup and operation
- Automatic repair function upon detection of tampering at startup, etc.

#### Prevent information leaks due to operational errors

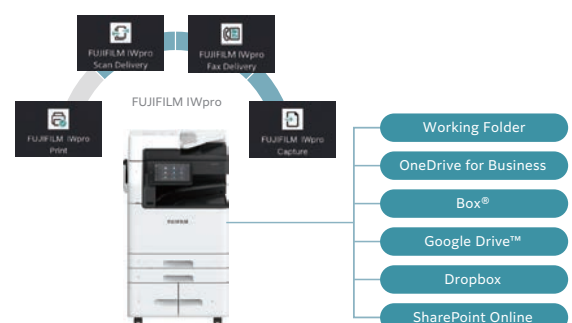
- Fixing the delivery destination of scanned documents
- Double input of fax destinations, etc.

## Integration with enhanced solution features for more flexible ways of working

By using your multifunction printer together with FUJIFILM IWpro\*, you can output documents even outside the office. This enables a flexible work style unconstrained by location. Automation of scanning and fax workflows, as well as integration with other companies' cloud services, makes it easier to utilize and share digitalized documents, improving your work efficiency.

Cloud storage helps you achieve a more efficient way of working that is not restricted by time or location. By combining cloud storage with FUJIFILM IWpro applications available on FUJIFILM multifunction printers, you can further streamline tasks such as scanning, faxing, and printing.

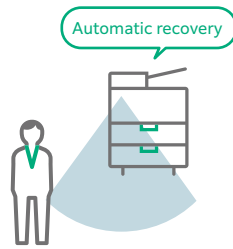
\* A cloud service provided by FUJIFILM Business Innovation. A separate contract is required for this service.



# The multifunction printers of the future

## Instant Readiness with Smart User Detection

Equipped with Smart WelcomEyes, sensors in the multifunction printer detect users and automatically deactivate sleep mode. Even when in an energy-saving sleep state, the printer is instantly ready for use, maintaining user convenience.



## Smart energy saving

The system is divided into four parts: the Document scanner, control panel, controller, and output devices, and power is supplied to only those parts that are used in accordance with the functions to reduce power consumption and CO<sub>2</sub> emissions.

## Staple-free Finisher\*

Supports staple-free stapling, ensuring environmental and safety benefits with waste reduction and a contamination free setup.

\* Optional.

## Resource Optimisation

- Paper usage reduction capabilities
  - Private Charge Print, scanning, Paperless Fax Delivery\*, consolidated single-page copy/print, etc.
  - Usage restrictions/totalization functions of main unit, reduction through visualization of usage status using FUJIFILM IWpro\*
- Designed for easy reuse and recycling after usage

\* Optional.

## Energy-saving technology

- Achieves high image quality and energy efficiency with a compact, low-power LED print head and low-temperature fusing Super EA-Eco toner
- Utilizes induction heating fusing technology for rapid heating without the need for preheating in standby or energy-saving modes, striking a balance between energy efficiency and convenience

FUJIFILM Business Innovation are committed to developing environmentally conscious products, including energy efficiency improvements and resource conservation in our multifunction devices and printers.

FUJIFILM Group introduced the certification program in which we clarify the environmental value of each product by assessments at the time of product development, conduct the evaluation based on our in-house certification criteria and certify the products that are excellent in reducing environmental impact\* as "Green Value Products". The certification criteria have been continuously updated, reflecting the latest regulatory and industry trends.

This product has been certified as a "Silver Rank" product that reduces environmental impact at a higher level than the industries' standard.



\* "Products that are excellent in reducing environmental impact" refer to products designed to reduce environmental impact throughout their life cycle, from raw material acquisition, production, distribution, use/maintenance and disposal/reuse/recycling.

## Reliable support system

### Easy solutions to resolve problems

From supplies replacement to unexpected device failures, most problems can be resolved without waiting for the service representatives or sales representatives.

1. Resolve problem using the "Help" function on the device
  - Self Help information is available on the control panel
  - Self Help information can be accessed via the mobile device by scanning the QR code displayed on the control panel
2. "Remote Assistance" with the help of operators
  - Connects directly to the Support Centre
  - An operator will remotely access the multifunction device to resolve the problem by guiding through the steps on the shared control panel



### Device Setting Backup Service

This is a service that always backs up the latest setting information to a cloud server. It allows you to be prepared for unexpected situations and use your multifunction printer with confidence.

Note: An application is required to use this service (free of charge).

### Keeping a close eye on your multifunction device on a daily basis

Connecting your multifunction printer and our EP system\* via the internet allows for automatic meter count verification, automatic delivery of consumables, daily status monitoring, and automatic notifications in the event of malfunctions. This reduces the burden on multifunction printer administrators and supports the use of our products with peace of mind.

\* The content of the services provided may vary depending on the usage region. For details, please contact one of our sales representative.

# FUJIFILM

FUJIFILM Business Innovation Vietnam Co., Ltd.

### Head Office

Ground Floor, 2<sup>nd</sup> Floor and 19<sup>th</sup> Floor, The Hallmark Building, 15 Tran Bach Dang, An Khanh Ward, Hochiminh City

Tel: (84-28) 3829 0038 Fax: (84-28) 3829 0032

### Hanoi Branch & Showroom

14<sup>th</sup> Floor, VCCI Tower, 9 Dao Duy Anh, Kim Lien Ward, Ha Noi

Tel: (84-24) 3824 1063 Fax: (84-24) 3824 1113

### Haiphong Branch

Room 515, 5<sup>th</sup> Floor, TD Business Center, 20A Le Hong Phong St., Gia Vien Ward, Hai Phong

Tel: (84-255) 3859 236 Fax: (84-255) 3859 239

### Danang Branch

3<sup>rd</sup> Floor, Danabook Tower, No. 76-78 Bach Dang Street, Hai Chau Ward, Da Nang

Tel: (84-236) 3892 896 Fax: (84-236) 3892 895

[fujifilm.com/fbvn](http://fujifilm.com/fbvn)

FUJIFILM Business Innovation aims to address environmental issues through climate change mitigation and resource circulation efforts. The available model varies depending on the country/region. Please ask the sales representatives for details. The product specifications, appearance and other details in this brochure are subject to change without notice for improvements.

**Reproduction Prohibitions** Please note that reproduction of the following is prohibited by law: •Domestic and foreign currencies, government-issued securities, and national bonds and local bond certificates. •Unused postage stamps, post cards, etc. •Certificate stamps stipulated by law. •Reproducing works forming the subject matter of copyright (literary works, musical works, paintings, engravings, maps, cinematographic works, drawings, photographic works, etc.) is not permitted unless the reproduction is for the purpose of personal use, family use or other similar uses within a limited circle.

**Trademarks** •FUJIFILM, FUJIFILM logo and FUJIFILM IWpro are registered trademarks or trademarks of FUJIFILM Corporation. •Apeos, Smart WelcomEyes and DocuWorks are registered trademarks or trademarks of FUJIFILM Business Innovation Corp.

•Microsoft, Active Directory, Azure, Microsoft Entra, Microsoft Edge, Excel, OneDrive, PowerPoint, SharePoint, Microsoft Teams, Windows, and Windows Server are registered trademarks of US Microsoft Corporation in the U.S. and other countries. •Apple, Mac, macOS, AirPrint, and AirPrint logo are trademarks of Apple Inc. registered in the U.S. and other countries and regions. •Adobe, Adobe logo, PostScript, and PostScript logo are either registered trademarks or trademarks of Adobe in the United States and/or other countries. •Mopria, the Mopria Logo, and the Mopria Alliance word mark and logo are registered and/or unregistered trademarks and service marks of Mopria Alliance, Inc. in the United States and other countries. •QR Code is a registered trademark of DENSO WAVE INCORPORATED. •All product names and company names mentioned in this brochure are trademarks or registered trademarks of their respective companies.



### For Your Safety

Before using the product, read the Instruction Manual carefully for proper use. Use the product with the power source and voltage specified. Be sure to establish ground connection. Otherwise, electronic shock may result in the case of a failure or short circuit.

The information is as of July, 2026. PIC-0250 VN (2607)